



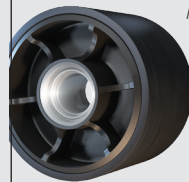
Damaged roller wheels reduce rubber track life. Protect your track investment and minimize downtime with the highest quality roller wheel for your tracked machine. Trackman's proprietary materials and processes outlast and outperform the competition where it matters most - out here.

Trackman®

*New & Re-manufactured
Polyurethane Wheels*



Roll with the Best



Most trusted manufacturer of advanced undercarriage wheels and mounts including our premium re-manufactured polyurethane wheels.

Trackman® leads the polyurethane wheel pack in innovation for positive-drive and friction-drive systems.

Our wheels reduce friction more efficiently and operate cooler without sacrificing abrasion resistance to outlast the competition. This durable design helps prevent field damage and extends the life of your track.

Revolutionary Process



Exclusive proprietary metal/rubber bonding process for best-in-class performance.

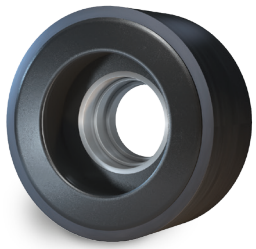
Field-tested technology that's proven to excel in the toughest applications.

Cooler-running undercarriage parts extend component and track life.

Available for the most demanding applications.

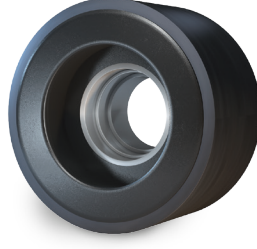
Trackman®

OUTWORKS. OUTLASTS. OUTPERFORMS. OUT HERE.



**Case Magnum Rowtrac™
Narrow Roller
615620**

Case Part #..... 48145599
Hub..... Cast Iron
Molded OD..... 13.2"
Width..... 6.5"
Max Weight..... 57 lbs.
**2018 & prior models*



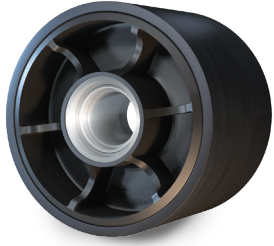
**Case Magnum Rowtrac™
Wide Roller
616020**

Case Part #..... 48145600
Hub..... Cast Iron
Molded OD..... 13.2"
Width..... 8"
Max Weight..... 89 lbs.
**2018 & prior models*



**Case Steiger Combine
614880**

Case Part #..... 48065298
Hub..... Cast Iron
Molded OD..... 13.2"
Width..... 10.4"
Max Weight..... 104 lbs.
**2007 & newer models*



**Case Steiger Quadtrac®
616280**

Case Part #..... 251343A3
Hub..... Cast Iron
Molded OD..... 13.2"
Width..... 10.4"
Max Weight..... 104 lbs.
**2000-2007 models*



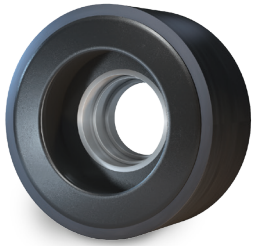
**Case Steiger Quadtrac®
614880**

Case Part #..... 48065298
Hub..... Cast Iron
Molded OD..... 13.2"
Width..... 10.4"
Max Weight..... 104 lbs.
**2007-2021 models*



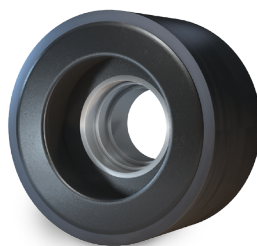
**Case Steiger Quadtrac®
617970**

Case Part #..... 90350265
Hub..... Cast Iron
Molded OD..... 13.2"
Width..... 6.5"
Max Weight..... 78 lbs.
**2022 and newer models*



**Case Steiger Rowtrac™
Narrow Roller
615620**

Case Part #..... 48145599
Hub..... Cast Iron
Molded OD..... 13.2"
Width..... 6.5"
Max Weight..... 57 lbs.



**Case Steiger Rowtrac™
Wide Roller
616020**

Case Part #..... 48145600
Hub..... Cast Iron
Molded OD..... 13.2"
Width..... 8"
Max Weight..... 89 lbs.



**Cat® 65-95
615760**

Cat Part #..... 9U-3384
Hub..... Steel
Molded OD..... 14"
Width..... 8.5"
Max Weight..... 55 lbs.



**Cat® 35-55
615850**

Cat Part #..... 1R-1365
Hub..... Steel
Molded OD..... 14"
Width..... 5.5"
Max Weight..... 36 lbs.



**Challenger Medium
614870**

AGCO Part #..... 548349D3
Hub..... Steel
Molded OD..... 14"
Width..... 5.5"
Max Weight..... 37 lbs.



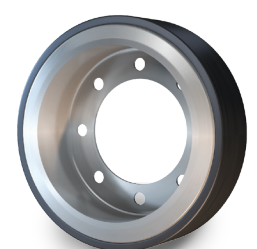
**Challenger Narrow
615880**

AGCO Part #..... 502930D1
Hub..... Steel
Molded OD..... 14"
Width..... 4.8"
Max Weight..... 29 lbs.



**Challenger Wide
614860
616880 - New Metal**

AGCO Part #..... 548350D3
Hub..... Steel
Molded OD..... 14"
Width..... 10"
Max Weight..... 53 lbs.



**John Deere® 8RT
Narrow
615010
617020 - New Metal**

JD Part #..... RE576549
Hub..... Steel
Molded OD..... 17"
Width..... 5"
Max Weight..... 48 lbs.



**John Deere® 8RT
Wide
615570
617350 - New Metal**

JD Part #..... RE597447
Hub..... Steel
Molded OD..... 17"
Width..... 9.3"
Max Weight..... 85 lbs.



**John Deere® 8000T
615560 - Wide Bolt On
617030 - New Metal**

JD Part #..... RE576550
Hub..... Steel
Molded OD..... 14.6"
Width..... 9.1"
Max Weight..... 67 lbs.



**John Deere® 8000T
Bearing Bore
615580**

JD Part #..... RE165014
Hub..... Cast Iron
Molded OD..... 14.6"
Width..... 5.1"
Max Weight..... 76 lbs.



**John Deere® 8000T
Cast Iron Wide Bolt On
615590**

JD Part #..... RE254787
Hub..... Cast Iron Bolt On
Molded OD..... 14.6"
Width..... 8"
Max Weight..... 89 lbs.



**John Deere® 8000T
Cast Iron Narrow Bolt On
615890**

JD Part #..... RE212733
Hub..... Cast Iron Bolt On
Molded OD..... 14.6"
Width..... 4.9"
Max Weight..... 53 lbs.



**John Deere® 8000T
Narrow Bolt On
615840**

JD Part #..... RE100291
Hub..... Steel
Molded OD..... 14.6"
Width..... 4.6"
Max Weight..... 33 lbs.



**John Deere® 9000T
615560
617030 - New Metal**

JD Part #..... RE576550
Hub..... Steel
Molded OD..... 14.6"
Width..... 9.1"
Max Weight..... 67 lbs.



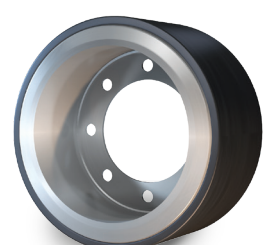
**John Deere® 9000T
Bearing Bore
615910**

JD Part #..... RE200310
Hub..... Cast Iron
Molded OD..... 14.6"
Width..... 8"
Max Weight..... 123 lbs.



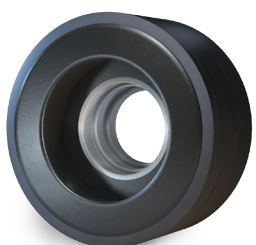
**John Deere® 9RT
615560
617030 - New Metal**

JD Part #..... RE576550
Hub..... Steel
Molded OD..... 14.6"
Width..... 9.1"
Max Weight..... 67 lbs.



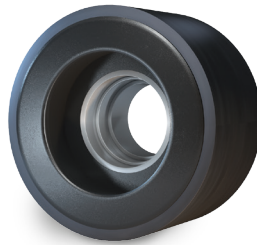
**John Deere® 9RX
Wide Bolt On
615570
617350 - New Metal**

JD Part #..... RE597447
Hub..... Steel
Molded OD..... 17"
Width..... 9.3"
Max Weight..... 85 lbs.



**New Holland Genesis
Smart Trax
Narrow Roller
615620**

Case Part #..... 48145599
Hub..... Cast Iron
Molded OD..... 13.2"
Width..... 6.5"
Max Weight..... 57 lbs.
**2018 & prior models*



**New Holland Genesis
Smart Trax
Wide Roller
616020**

Case Part #..... 48145600
Hub..... Cast Iron
Molded OD..... 13.2"
Width..... 8"
Max Weight..... 89 lbs.
**2018 & prior models*



**Versatile®
Wide Bogie Wheel
617040
617960 - New Metal**

Versatile Part #..... 86058444
Hub..... Steel
Molded OD..... 14"
Width..... 10"
Max Weight..... 53 lbs.

Contact
Loc Performance
1115 S. Wayne St.
St. Marys, OH 45885
1-877-394-0482
trackinginquiries@locper.com

www.locperformance.com

Trackman by 

Loc Performance, headquartered in Plymouth, MI, provides track systems, mechanical products, fabricated structures, and assemblies for both military and industrial applications. With proven capabilities in product design and development through production, Loc offers comprehensive solutions and exceptional customer service to produce the highest quality products at competitive pricing.

Learn more at www.locperformance.com

Core Buy Back Program

Turn your used into a re-useable wheel and save money in the process.

Call 1.877.394.0482 for current pricing and details on our reclaim core process.

Trackman by 

OUTWORKS. OUTLASTS. OUTPERFORMS. OUT HERE.

AMERICAN OWNED, AMERICAN MADE. 

Competitor's Poly Wheels



Major damage to outer surface and significant separation from the metal hubs.

Trackman Roller Wheels



No significant damage to outer wheel or separation from metal hubs.

Trackman Roller Wheels VS Competitor's Poly Wheels.
THERE IS NO COMPARISON.

We installed Trackman with roller wheels on one side of a Challenger® MT700 and the competition's poly roller wheels on the other.

After 12,000 hours under normal operating conditions, Trackman exhibited far superior wheel life.